



This project is funded by the European Commission's
Directorate-General Climate Action



EU Transport GHG: Routes to 2050 II

Exploration of the potential for less transport-intensive
paths to societal goals (Task 4)

Ian Skinner (TEPR)

29 June 2011, Diamant Conference Centre, Brussels

Partners

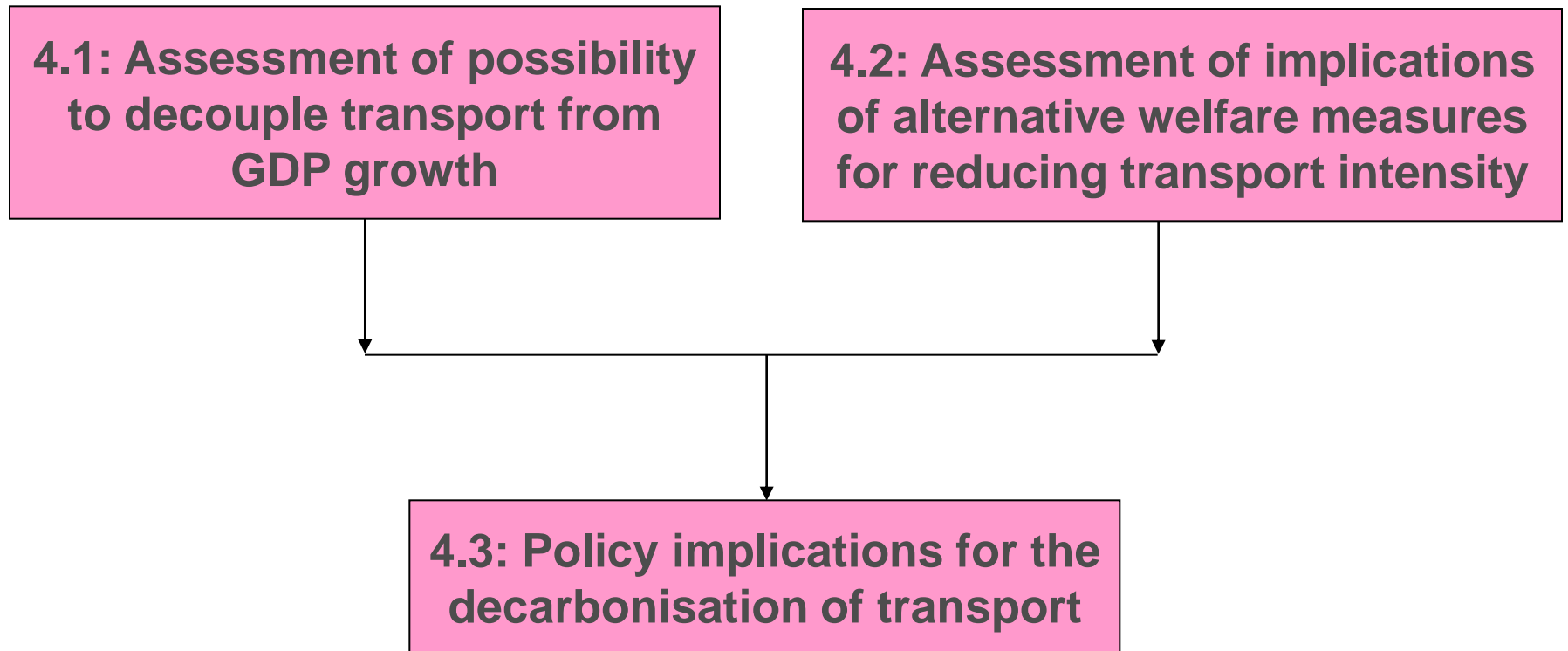
www.eutransportghg2050.eu



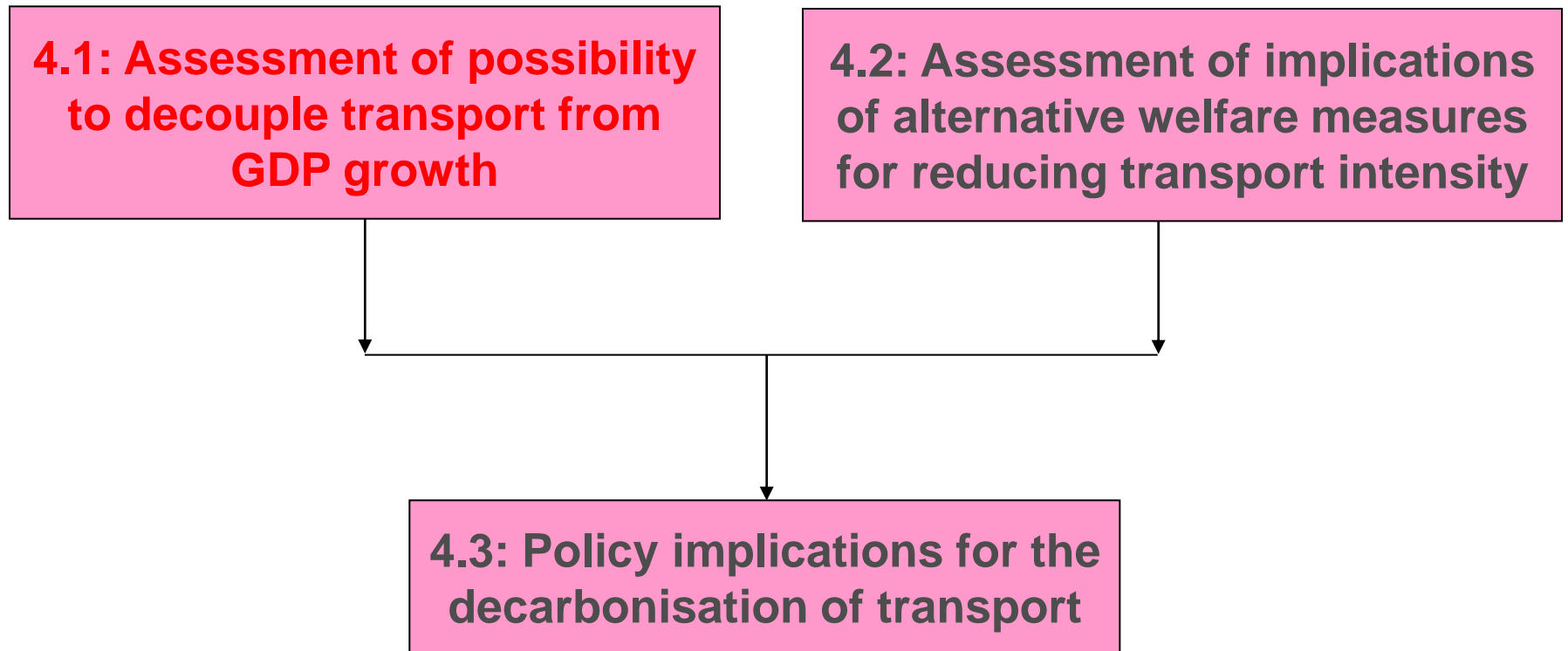
Transport and
Environmental
Policy
Research

TNO innovation
for life

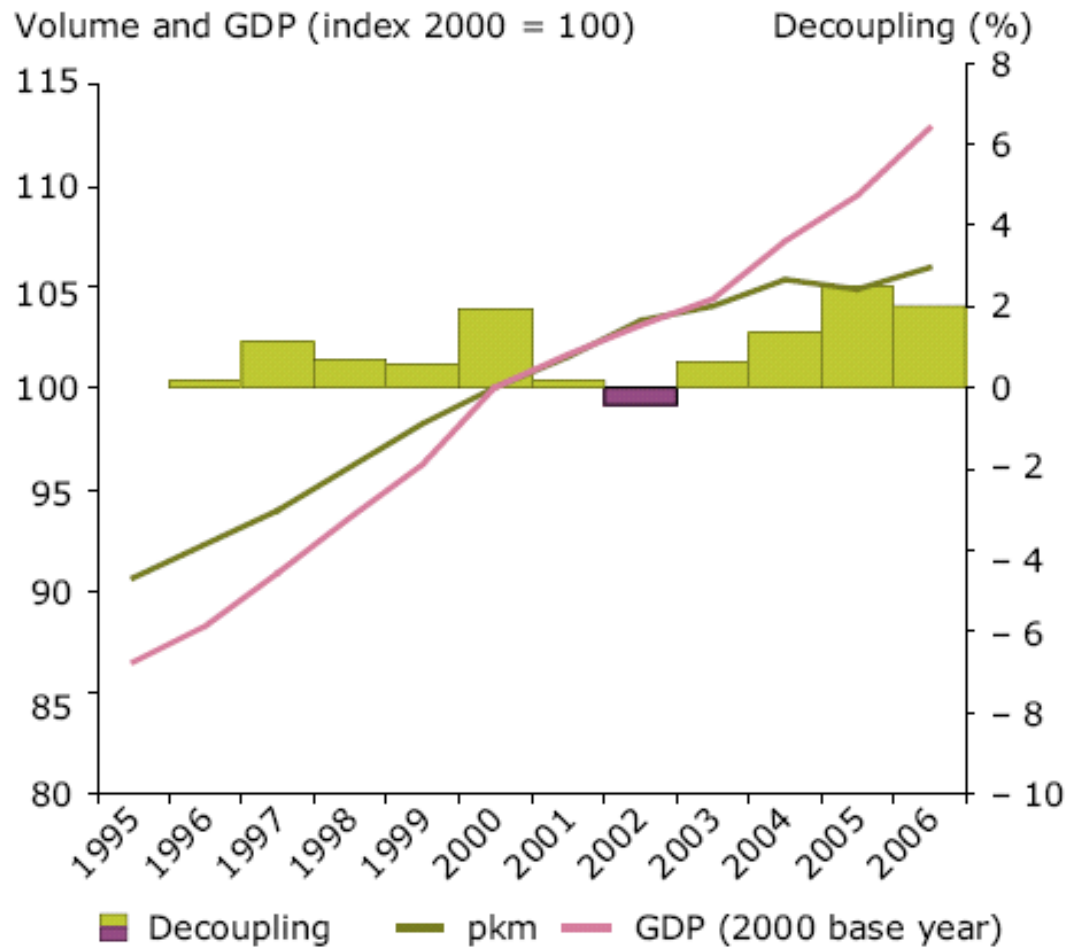
Exploration of the potential for less transport-intensive paths to societal goals: Sub-Tasks...



Exploration of the potential for less transport-intensive paths to societal goals: Sub-Tasks...

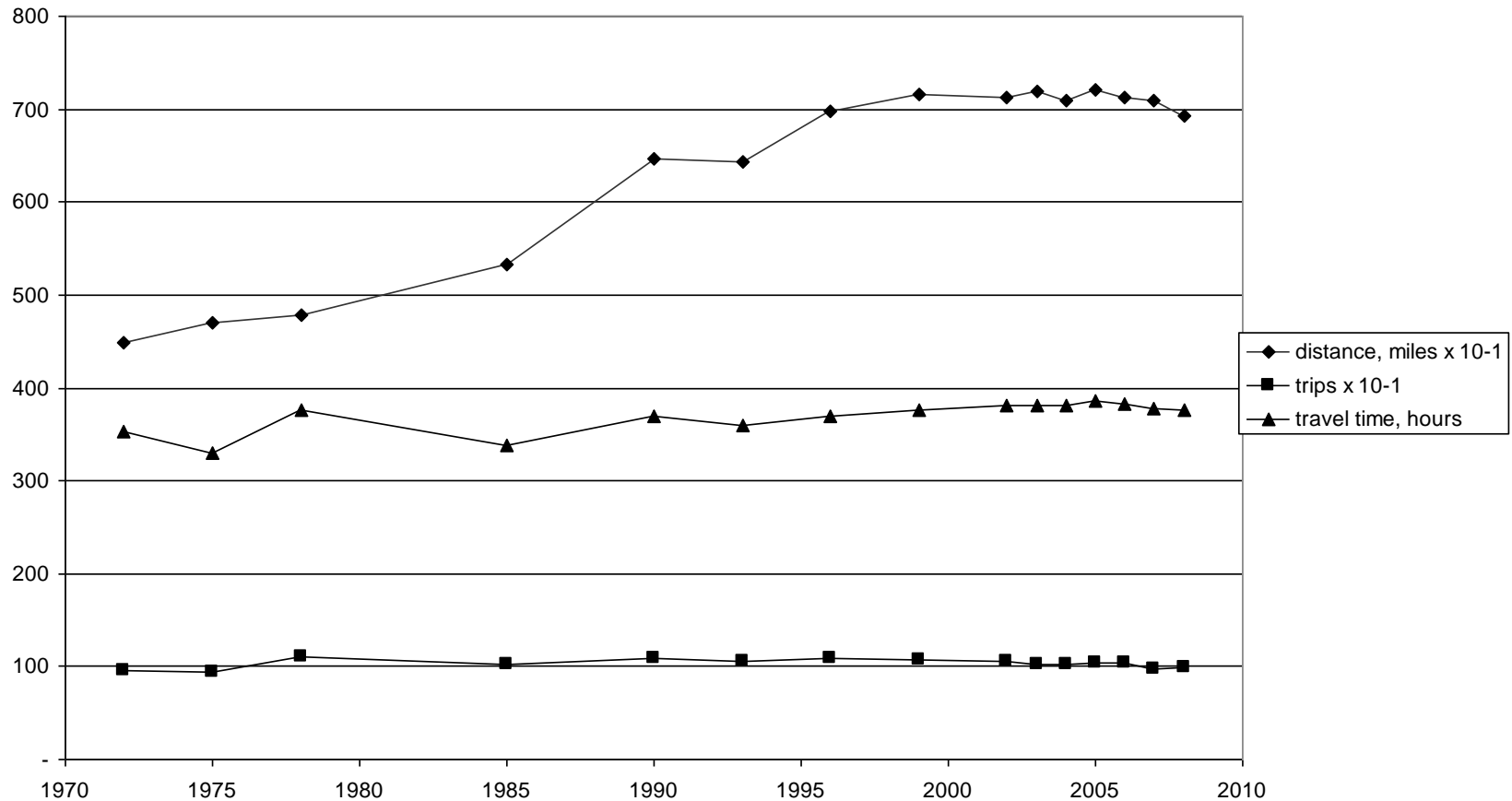


Background to Sub-Task 4.1: Has there been limited decoupling...



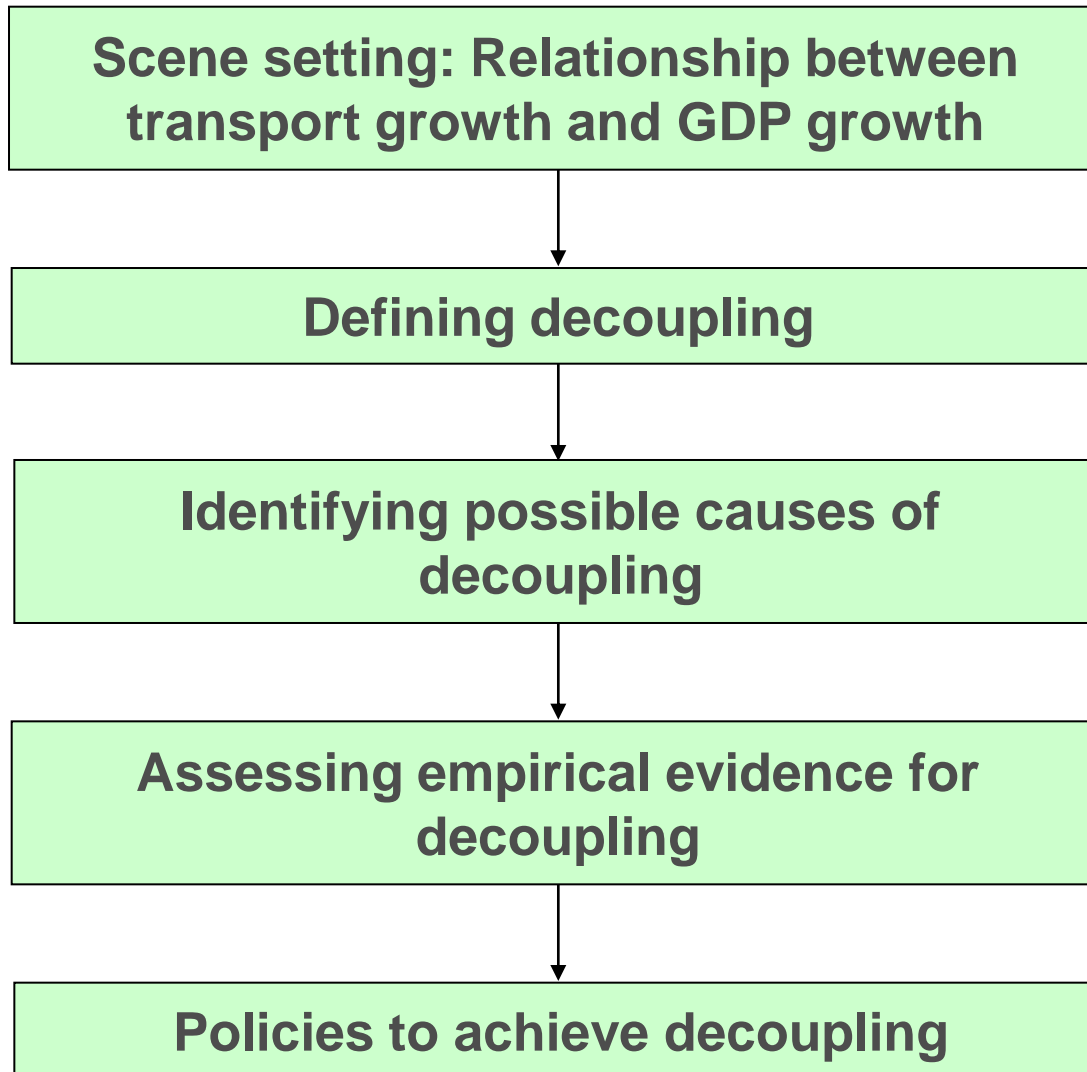
Source:
EEA,
2008

Or do we have demand saturation (for daily travel)?

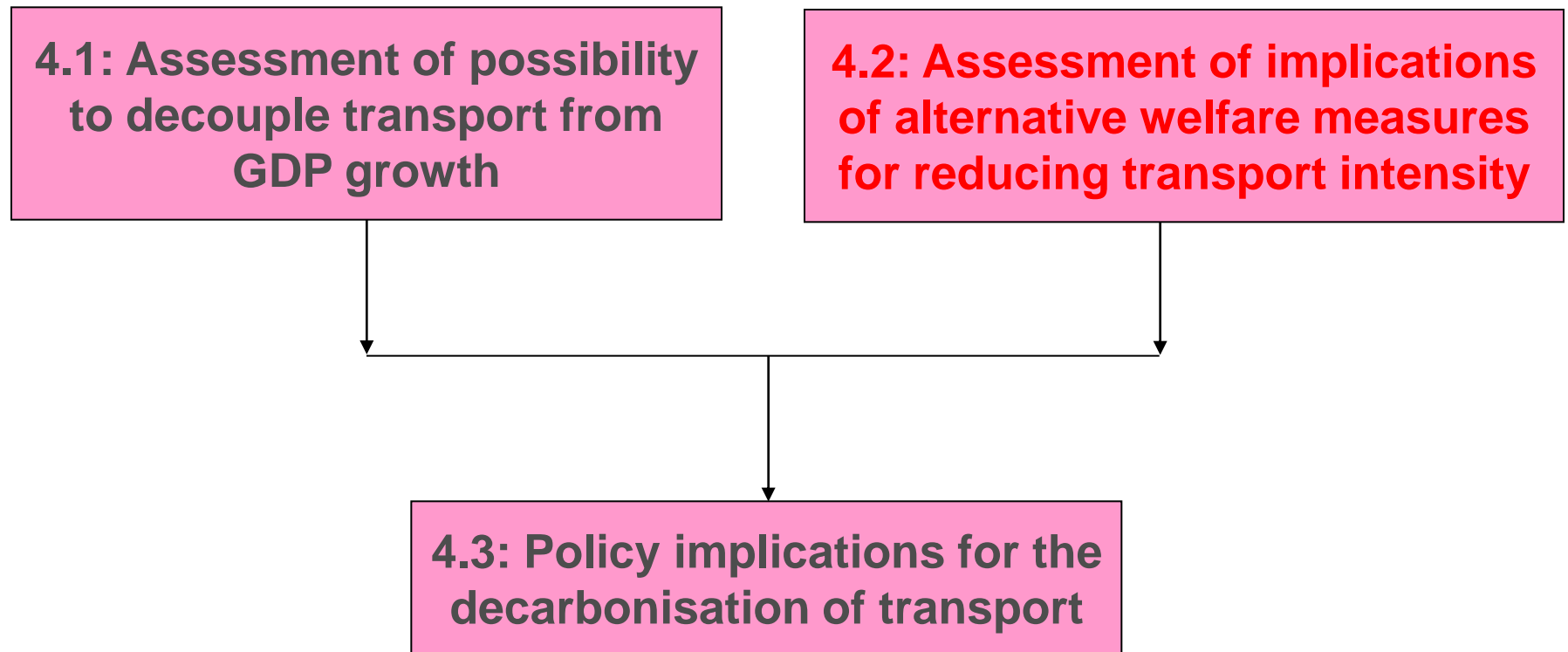


Source: Metz (2010), presentation at Meeting 6 of EU Transport GHG: Routes to 2050? project; based in UK National Travel Survey data; see www.eutransportghg2050.eu

Steps of Sub-Task 4.1



Exploration of the potential for less transport-intensive paths to societal goals: Sub-Tasks...



Sub-task 4.2: Inspiration and actions

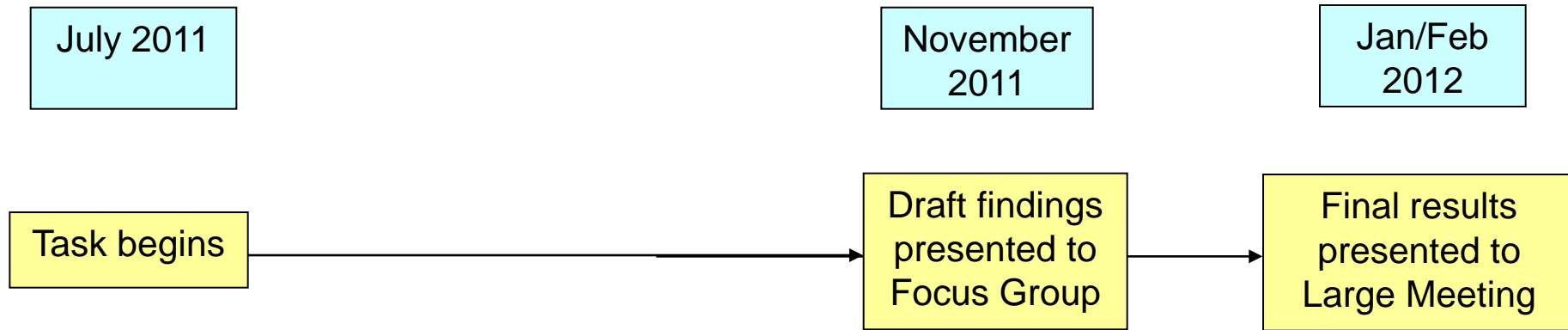
Inspiration:

- Beyond GDP... E.g. 2007 conference and 2009 Communication (COM (2009) 433 *GDP and Beyond - measuring progress in a changing world*)
- *Prosperity without Growth* (Jackson, 2009)
- Europe 2020's *Resource-Efficient Europe* Flagship Initiative

Actions - Explore implications of the following for transport:

- Alternative (GDP) indicators for transport
- Thoughts of Jackson and others
- Moves towards a resource efficient and climate resilient economy (as in Europe 2020)
- Means: Literature review; analysis; internal/expert/stakeholder review

Timings and responsibilities



- Task lead: CE Delft, supported by TEPR
- Sub-task leads:
 - 4.1 (decoupling): CE Delft
 - 4.2 (alternative approaches to growth): TEPR
 - 4.3 (policy implications): CE Delft/TEPR

Any questions or comments...

...?